

H115.0558 Teleskopstation / Station télescopique
Montageanleitung / Instructions de montage
Assembly instruction



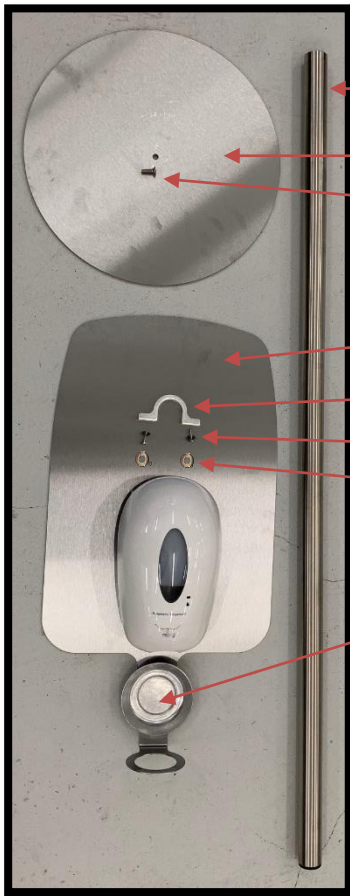
Ernst Hausammann & Co. AG
CH-8010 Zürich
Rautstrasse 19, Postfach
Tel 0800 815 844
Fax +41 44 491 22 11
info@hausammann.com
www.hausammann.com





Ernst Hausammann & Co. AG

CH-8010 Zürich
Rautistrasse 19, Postfach
Tel 0800 815 844
Fax +41 44 491 22 11
info@hausammann.com
www.hausammann.com



A

B

Ba

C

Ca

Cb

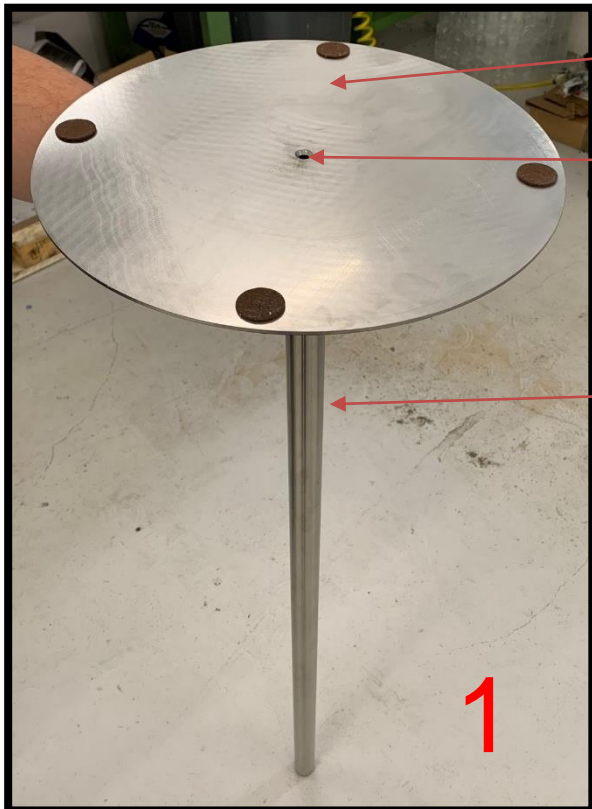
Cc

D

C
O
N
T
E
N
T

Wenn Sets vormontiert

- Nur Schritt 1+3 nötig
- Schritt 2 vormontiert

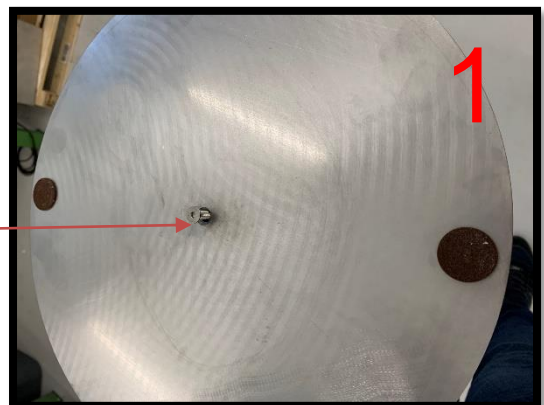


B

Ba

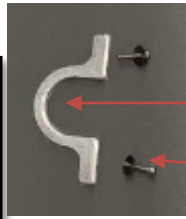
A

1

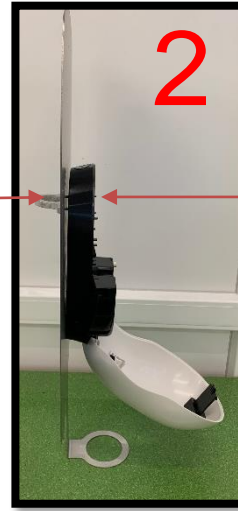


Ba

1



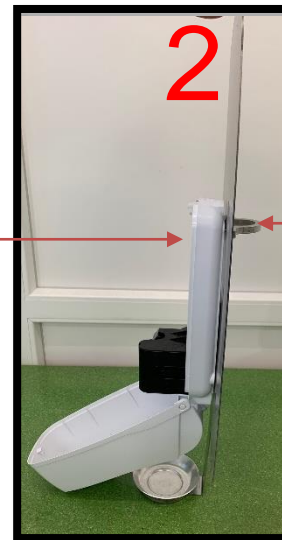
C



Ca

Cb + Cc

2/3



Cb + Cc

2/3

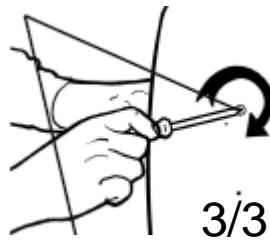


Ernst Hausammann & Co. AG

CH-8010 Zürich
Rautstrasse 19, Postfach
Tel 0800 815 844
Fax +41 44 491 22 11
info@hausammann.com
www.hausammann.com



Cb + Cc



D

- ! - Bitte die Fluchtwege freihalten!
- Ihre spezifische max. Lagermenge für Desinfektionsmittel beachten!
- Neben Durchgang positionieren

- ! - Respecter les voies d'évacuation!
- Attention à la qté max de stockage pour désinfectants !
- Positionner à côté des passages

